

# FA

EURO 5





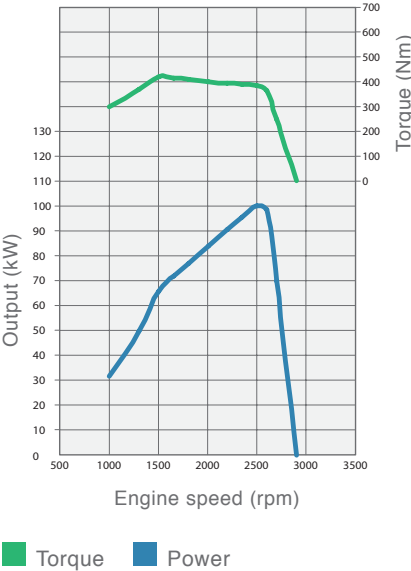
# FA



**EFFICIENT DRIVETRAIN**  
The fuel-efficient, common rail, direct injection engine with four valves per cylinder delivers ample power and torque, while lowering operating costs.

Engine emissions are reduced through Selective Catalytic Reduction (SCR), with AdBlue® injected into the exhaust stream.

**PEAK PERFORMANCE**  
The 3.9-litre 4D37 diesel engine reaches 100kW peak power at 2500rpm and an impressive 420Nm peak torque at 1500rpm.



The excellent 9-tonne FA914R features state-of-the-art build quality and proven FUSO heritage, providing peace of mind that it will pay its way – every day!

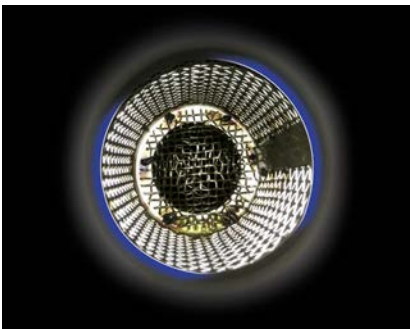


**SMOOTH, DURABLE TRANSMISSION**  
The six-speed (6F, 1R) synchromesh overdrive transmission facilitates smooth, efficient gear shifts. The large diameter organic clutch plate provides good durability and smooth clutch engagement.

**ENGINE RPM THROTTLE CONTROL**  
Demand-based rpm setting.



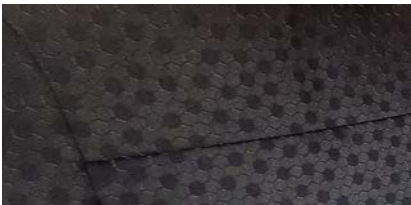
**E-VISCOUS FAN**  
An electronic viscous cooling fan reduces engine load for improved fuel efficiency and overall performance.



**FUEL PROTECTION**  
A mesh grille at the mouth of the fuel tank prevents fuel theft.

OVERVIEW **FA** EURO 5

**DRIVER COMFORT**  
A fully adjustable driver's seat and tilt-and-telescoping steering wheel enable drivers to choose the most comfortable driving position based on their own requirements. The lined roof, side trim, handy console pocket and roof storage make the FA914R a great place to work. Air-conditioning, power windows and central locking further contribute to driver comfort and reduced fatigue.



**SIT BACK AND RELAX**  
A new 3D seat fabric is designed to add a premium look and feel to the cab interior.



**LED LAMP**  
Enables greater visibility in low-light conditions.



**AERODYNAMIC APPROACH**  
The aerodynamic cab design with new door corner aerofoil reduces wind resistance to maximise fuel efficiency and enable a quieter, more comfortable drive.



**EASY-ACCESS DRIVE DATA**  
An LED dashboard panel makes vital information easily visible, including distance travelled, average speed and fuel consumed. An alarm buzzer will sound if the engine overheats.



**STANDOUT STYLING**  
A modern design with new dark-grey exterior styling ensures you'll have a truck to be proud of – and one that stands out from the crowd.

Actual vehicle may differ slightly from pictures shown.

OVERVIEW **FA** EURO 5



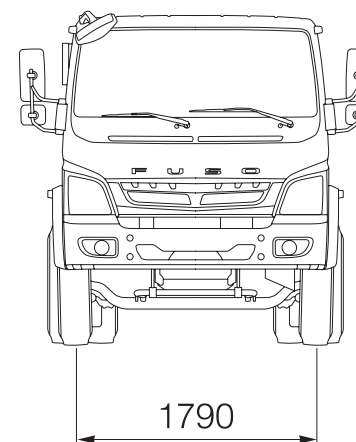
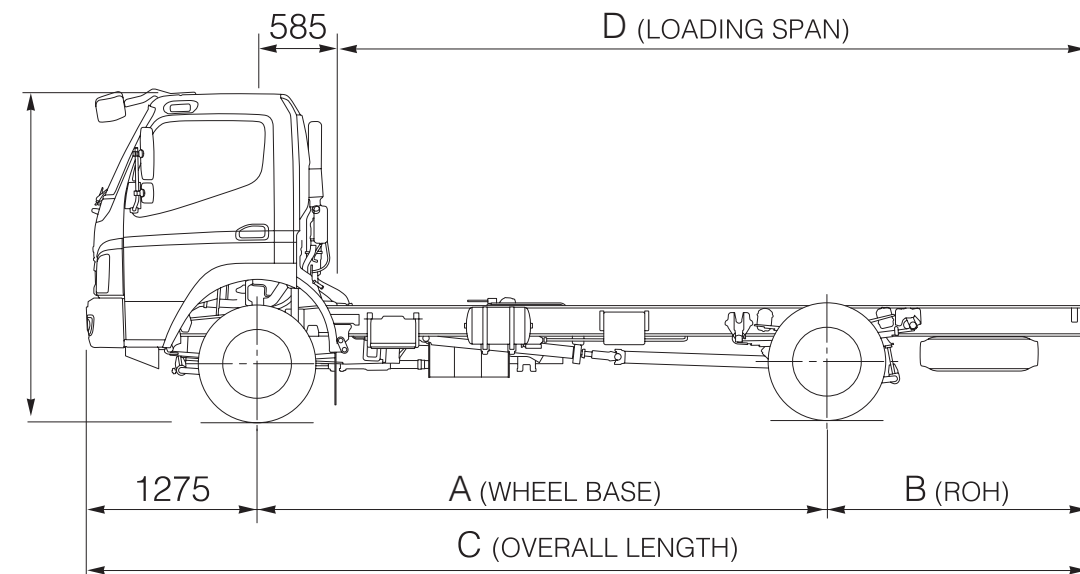
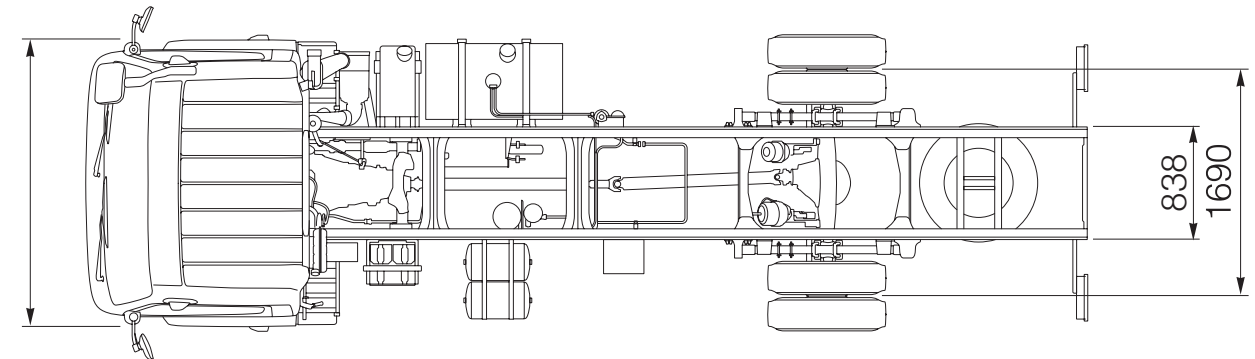
# SPECIFICATIONS

FA Rigid 4x2			
Model		FAV1PK1L	
Drive type		Left-hand drive	
Crew		3 (driver + 2 passengers)	
DIMENSIONS (mm)			
Wheelbase		4800	
Overall length		8195	
Overall width		2200	
Overall height, approx.		2405 (unladen)	
Tread	Front	1790	
	Rear	1690	
WEIGHTS (kg)			
Kerb weight *		3365	
Max. GVW (tech)		9600	
CALCULATED PERFORMANCE			
Max. speed (km/h)		100	
Max. running gradeability (tan θ)(%)		23.7	
ENGINE			
Model		4D37, 3.907-litre, 4 valve per cylinder, Euro V	
Type		4-stroke cycle, water cooled direct injection, turbocharged diesel engine	
Max. output		100kW (140hp) / 2500rpm	
Max. torque		420Nm / 1500rpm	
Alternator		24V/45A	
DRIVE LINE			
Clutch		Single dry plate, diaphragm spring, hydraulic control with concentric slave cylinder (CSC)	
Transmission		MO36 - Mechanical (manual), synchromesh type, 6 forward + 1 reverse	
	Gear ratios	5.4 - 3.657 - 2.368 - 1.465 - 1 - 0.711, Rev: 5.4	
Final reduction gear		Full floating type, single reduction, hypoid gears	
	Ratio	4.56	
CHASSIS			
Axle capacity (kg)	Front	3600	
	Rear	7400	
Tyres	Front	Single, 8.25R16 (radial tube)	
	Rear	Dual, 8.25R16 (radial tube)	
Suspension		Semi elliptic, laminated leaf spring	
Brakes	Service	Full air, S-cam, dual circuit, ABS	
	Parking	Spring actuated, pneumatically with hand brake valve	
	Auxiliary	Exhaust brake	
Fuel tank capacity (L)		200	
Electrical system battery		2x12V, 75Ah	

\* Complete Cab chassis vehicle (without driver & rear body) with:  
• Coolant • Fuel tank filled with fuel of 90% of its capacity • Spare wheel • Standard tool kit • Wheel chock  
• All liquids to ensure correct functioning of vehicle • Warning triangle (if provided) • Jack and jack rod

A policy of continual improvement means that specifications detailed on this sheet are subject to change without notice. Contact your authorised FUSO dealer to confirm current specifications. FUSO is a registered trademark of Mitsubishi Fuso Truck & Bus Corporation. Copyright © (2021).

# DRAWINGS (mm)



## COLOR VARIATION

Standard ☐ Arctic White

	FAV1PK1L
A	4800
B	2120
C	8195
D	6215



#### Our brand:

FUSO leverages its innovative technology and brand to deliver trusted quality, excellent economy, stylish yet functional designs, and valuable services to customers around the world. FUSO products always deliver maximum usability, while embodying progressiveness and a grasp of advanced technologies. Constantly striving for improvements in efficiency and reduction in emissions, FUSO enables customers and partners to reap maximum benefits while being part of an ecosystem of sustainable transport worldwide.



<https://habtoormotors.com/fusouae>

#### Find us online



MITSUBISHI FUSO TRUCK & BUS CORPORATION



MITSUBISHI FUSO TRUCK & BUS CORPORATION



**800** ALHABTOOR  
254228667  
[crm@alhabtoormotors.com](mailto:crm@alhabtoormotors.com)

