

# FI

EURO 5





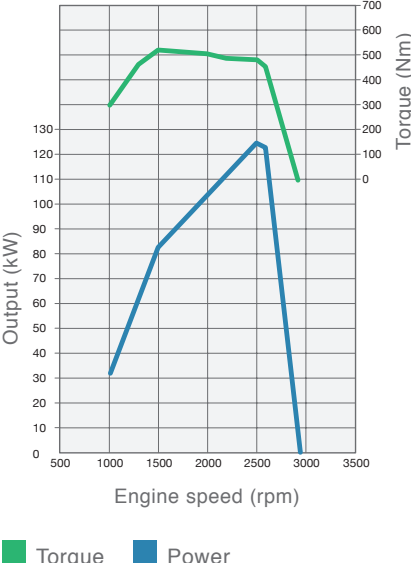
# FI



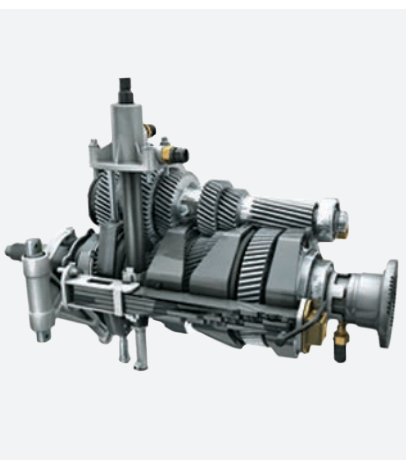
**EFFICIENT DRIVETRAIN**  
The fuel-efficient, common rail, direct injection engine with four valves per cylinder delivers ample power and torque, while lowering operating costs.

Engine emissions are reduced through Selective Catalytic Reduction (SCR), with AdBlue® injected into the exhaust stream.

**PEAK PERFORMANCE**  
The 3.9-litre 4D37 diesel engine reaches 125kW peak power at 2500rpm and an impressive 520Nm peak torque at 1500rpm.

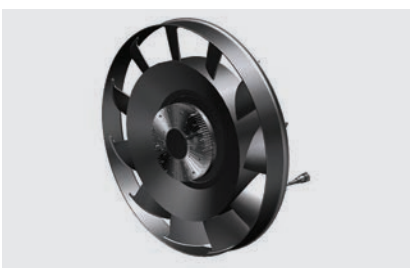


The impressive 12-tonne FI1217R features state-of-the-art build quality and proven FUSO heritage, providing peace of mind that it will pay its way – every day!

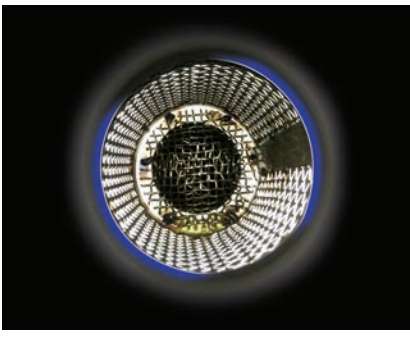


**SMOOTH, DURABLE TRANSMISSION**  
The six-speed (6F, 1R) synchromesh overdrive transmission facilitates smooth, efficient gear shifts. The large diameter organic clutch plate provides good durability and smooth clutch engagement.

**ENGINE RPM THROTTLE CONTROL**  
Demand-based rpm setting.



**E-VISCOUS FAN**  
An electronic viscous cooling fan reduces engine load for improved fuel efficiency and overall performance.



**FUEL PROTECTION**  
A mesh grille at the mouth of the fuel tank prevents fuel theft.

OVERVIEW

EURO 5

**DRIVER COMFORT**  
A fully adjustable driver's seat and tilt-and-telescoping steering wheel enable drivers to choose the most comfortable driving position based on their own requirements. The lined roof, side trim, handy console pocket and roof storage make the FI1217R a great place to work. Air-conditioning, power windows and central locking further contribute to driver comfort and reduced fatigue.



**SIT BACK AND RELAX**  
A new 3D seat fabric is designed to add a premium look and feel to the cab interior.



**LED LAMP**  
Enables greater visibility in low-light conditions.



**AERODYNAMIC APPROACH**  
The aerodynamic cab design with new door corner aerofoil reduces wind resistance to maximise fuel efficiency and enable a quieter, more comfortable drive.



**EASY-ACCESS DRIVE DATA**  
An LED dashboard panel makes vital information easily visible, including distance travelled, average speed and fuel consumed. An alarm buzzer will sound if the engine overheats.



**STANDOUT STYLING**  
A modern design with new dark-grey exterior styling ensures you'll have a truck to be proud of – and one that stands out from the crowd.

Actual vehicle may differ slightly from pictures shown.

OVERVIEW

EURO 5



## SPECIFICATIONS

## FI Rigid 4x2

Model		FIV1PKX2L
Drive type		Left-hand drive
Crew		3 (driver + 2 passengers)
DIMENSIONS (mm)		
Wheelbase		4800
Overall length		8595
Overall width		2210
Overall height, approx.		2480 (unladen)
Tread	Front	1790
	Rear	1695

**WEIGHTS (kg)**

Kerb weight *	4025
Max. GVW (tech)	11990

**CALCULATED PERFORMANCE**

Max. speed (km/h)	100
Max. running gradeability (tan θ)(%)	29.5

**ENGINE**

Model	4D37, 3.907-litre, 4 valve per cylinder, Euro 5
Type	4-stroke cycle, water cooled direct injection, turbocharged diesel engine
Max. output	125kW (170hp) / 2500rpm
Max. torque	520Nm / 1500rpm
Alternator	24V/45A

**DRIVE LINE**

Clutch	Single dry plate, diaphragm spring, hydraulic control with air-assisted booster	
Transmission	G85 - Mechanical (manual), synchromesh type, 6 forward + 1 reverse	
	Gear ratios	6.696 - 3.806 - 2.289 - 1.48 - 1.00 - 0.728, Rev: 6.294
Final reduction gear	Full floating type, single reduction, hypoid gears	
	Ratio	5.13

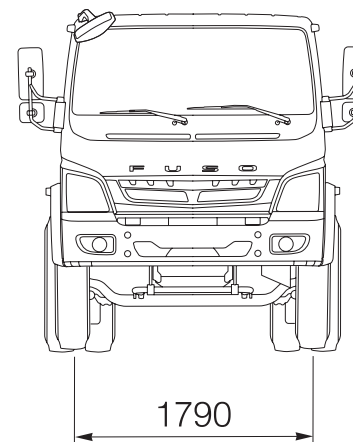
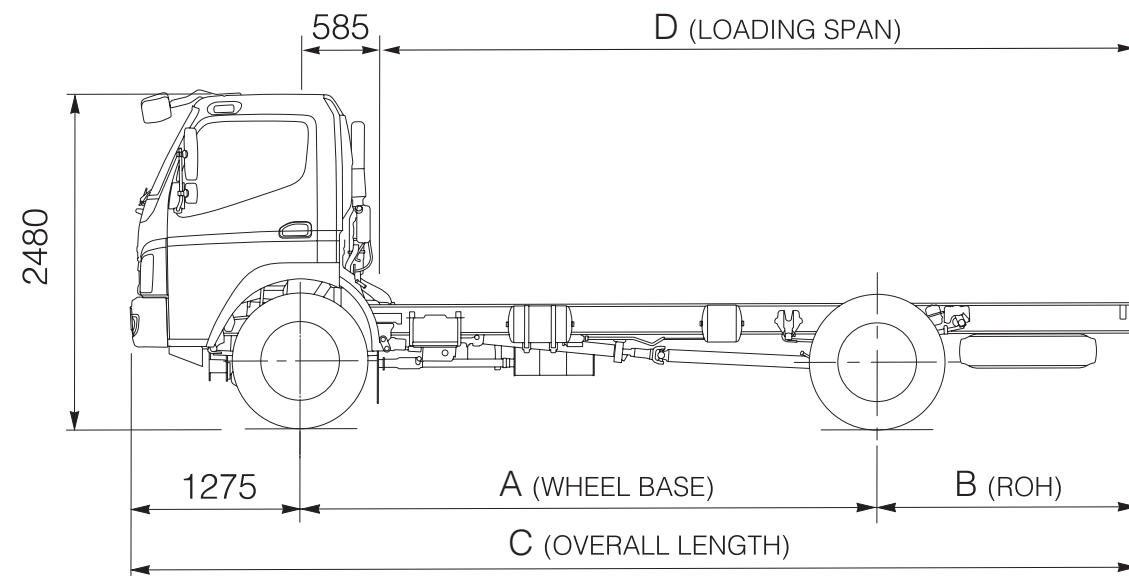
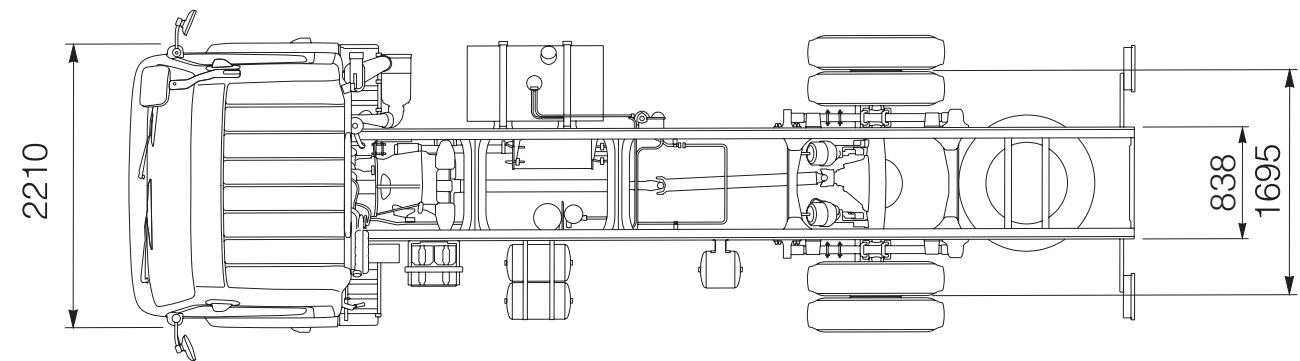
**CHASSIS**

Axle capacity (kg)	Front	5000
	Rear	9144
Tyres	Front	Single, 8.25R20 (radial tube)
	Rear	Dual, 8.25R20 (radial tube)
Suspension	Semi elliptic, laminated leaf spring	
Brakes	Service	Full air, S-cam, dual circuit, ABS
	Parking	Spring actuated, pneumatically with hand brake valve
	Auxiliary	Exhaust brake
Fuel tank capacity (L)	200	
Electrical system battery	2x12V, 75Ah	

\* Complete Cab chassis vehicle (without driver & rear body) with:  
• Coolant • Fuel tank filled with fuel of 90% of its capacity • Spare wheel • Standard tool kit • Wheel chock  
• All liquids to ensure correct functioning of vehicle • Warning triangle (if provided) • Jack and jack rod

A policy of continual improvement means that specifications detailed on this sheet are subject to change without notice. Contact your authorised FUSO dealer to confirm current specifications. FUSO is a registered trademark of Mitsubishi Fuso Truck & Bus Corporation. Copyright © (2021).

## DRAWINGS (mm)

**COLOR VARIATION**

Standard ☐ Arctic White ☐

	FIV1PKX2L
A	4800
B	2520
C	8595
D	6615



#### Our brand:

FUSO leverages its innovative technology and brand to deliver trusted quality, excellent economy, stylish yet functional designs, and valuable services to customers around the world. FUSO products always deliver maximum usability, while embodying progressiveness and a grasp of advanced technologies. Constantly striving for improvements in efficiency and reduction in emissions, FUSO enables customers and partners to reap maximum benefits while being part of an ecosystem of sustainable transport worldwide.



<https://habtoormotors.com/fusouae>

#### Find us online



mitsubishi FUSO TRUCK & BUS CORPORATION



mitsubishi FUSO TRUCK & BUS CORPORATION

 **800** ALHABTOOR  
254228667  
[crm@alhabtoormotors.com](mailto:crm@alhabtoormotors.com)